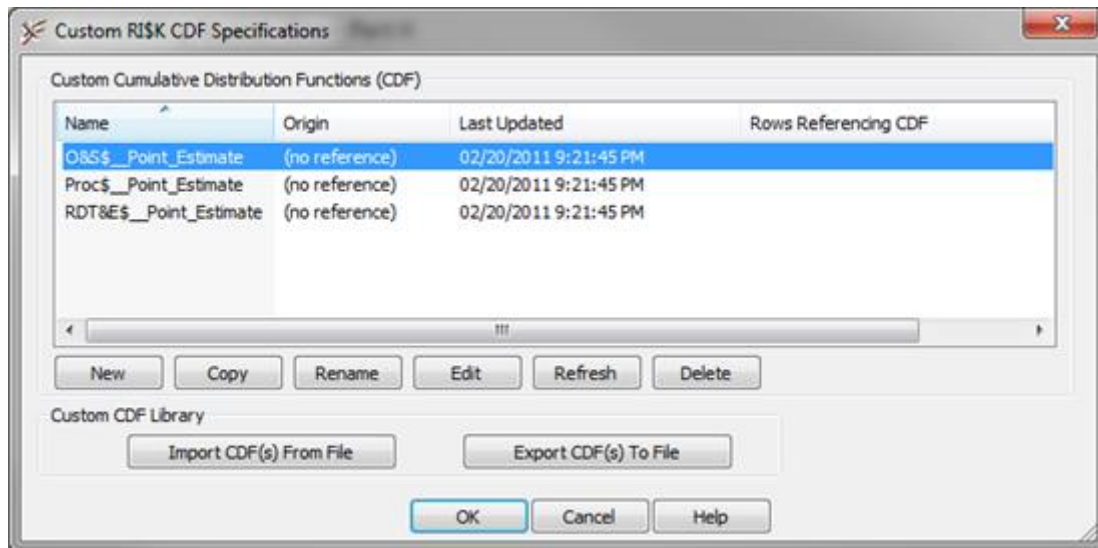


## Tip of the Month

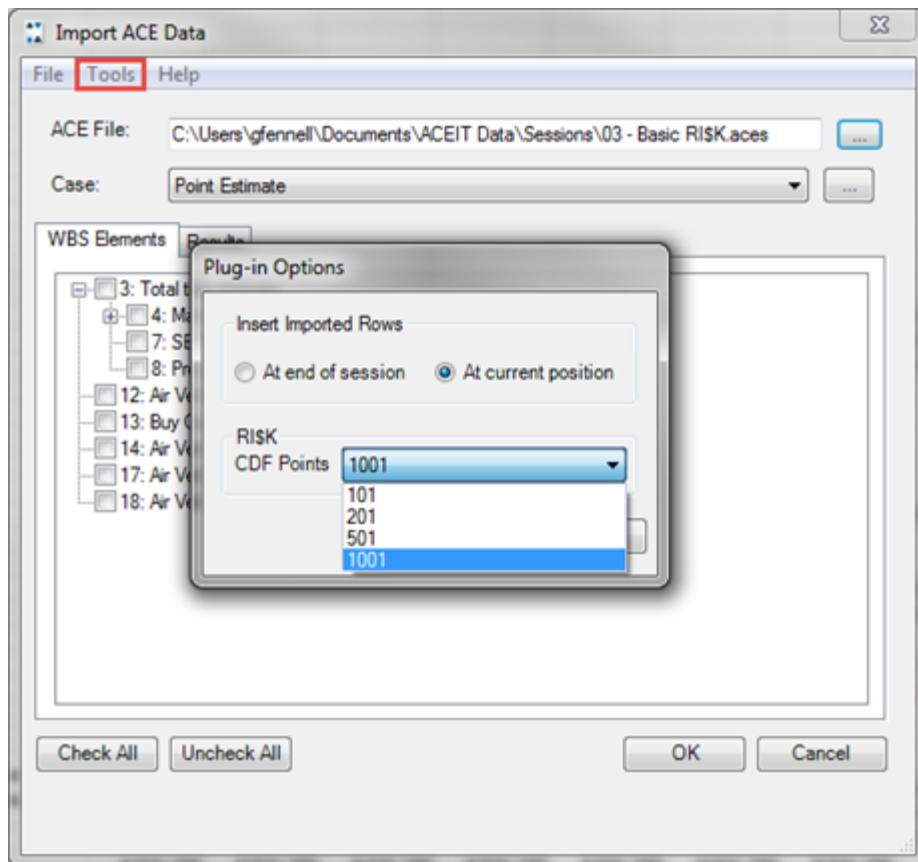
### Controlling Session Size – Part II

Our June *Tip of the Month* introduced some ways to control your ACE session size. This month, we'll highlight another option for reducing your session size.

**Custom Cumulative Distribution Functions (CDFs)** provide a mechanism to create a user defined uncertainty distribution for a row. Custom CDFs can be defined using 2 to 1,001 different percentile/factor pairs. Custom CDFs created from RISK results on a row in the session use 1,001 data points to define the distribution. This is also the case for RISK results imported using the ACE-to-ACE plug-in. Having a lot of custom CDFs in the session increases session size. One way to reduce session size is by ensuring that any custom CDFs in the session are actually being utilized. If you delete a row in the session that has a custom CDF specified, the CDF is not automatically deleted from the session. The **Custom RISK CDF Specifications** dialog (accessible from the Construction ribbon) lets you see all custom CDFs in the session. If the column entitled "Rows Referencing CDF" is blank, that CDF is stored in the session but is not being used anywhere. Deleting these unused CDFs will decrease session size.



When importing rows and their RISK distributions using the **ACE-to-ACE plug-in**, you can specify how many data points to import for each CDF. By default, 1001 points are imported for each row that includes a distribution, but this can be changed by selecting **Tools > Options** from the plug-in and changing the number of CDF points.



---

## Brown Bag Training



ACEIT Brown Bags offer remote training for a specific topic. The training typically runs 1 to 2 hours and is presented by a certified ACEIT trainer.

Below is a list of a few popular Brown Bags that are available.

Contact [ACEIT Training](#) for more information.

**ACEIT What-if Capability (with RISK)** - Advanced what-if scenarios and approaches for implementing schedule risk

**Cost Benefit Analysis (CBA) Metrics in ACE** - Using ACE to Calculate/model common metrics used in CBAs

**CO\$TAT Distribution Finder** - The CO\$TAT Distribution Finder explained - settings, results, and real applications

**Custom Inflation/Escalation and Reportable BY** - Creating custom escalation indices and the ACE Reportable BY and Implied Expenditure reports

**Exploring ACE RISK Phasing Features** – Allocating RISK dollars to years, explaining, prorate, front-load, back-load, and stretch loading

**How to Develop a RISK Distribution based on Probability Level Statistics (Custom CDF)** - Creating and using custom RISK CDFs in ACE

**Incorporating Budget into your ACE Session** - Estimate and budget reports, budget what-if drills, and understanding estimate drivers

See the ACEIT website for the complete [Brown Bag](#) listing

---

# Decide what ACEIT training is Right for You!

All training courses have been updated and are being taught with the ACEIT 7.5 software!

## Open ACEIT classes in Washington DC!

Dec 13-16 – ACEIT 101: Introduction to ACE, CO\$TAT and POST

### ACEIT Mechanics Training

Need 1-on-1 assistance with **Using ACEIT Applications?**  
(Onsite or Remote)

Mechanics training provides a one-on-one training environment on ACEIT features/techniques to directly solve your specific problems. Through this offering we can provide hands-on training to first-time users in implementing an ACE cost model; help convert Excel (or other) models to ACE; provide guidance on cost model enhancement; and provide advanced training on key tools and concepts like ACDB, CO\$TAT, POST, JACS and model automation using functions.

### ACEIT Onsite Training

If you have 5-12 students needing training we offer **ONSITE** training.

Email for a Training bid: [ACEIT\\_Train@tecolote.com](mailto:ACEIT_Train@tecolote.com) or visit

<https://www.aceit.com/training-center/training-options/on-site-training>



[ACEIT Suite](#)



[Training Schedule](#)



[Resources](#)

---

#### Popular Links

[ACEIT Overview](#)  
[Training Center](#)  
[Purchase Options](#)  
[Current Customers](#)

#### Subscriber Content

[Inflation Indices](#)  
[Patches](#)  
[Instructional Videos](#)

---

[ACEIT Website](#) | [Privacy](#) | [Legal](#) | [Contact Us](#)

You are receiving this email because you are associated with an active ACEIT site and have registered on the ACEIT website. To be removed from this e-mail, [update your e-mail preference\(s\)](#) on the My Account section of our website.



© copyright 2004-2016