

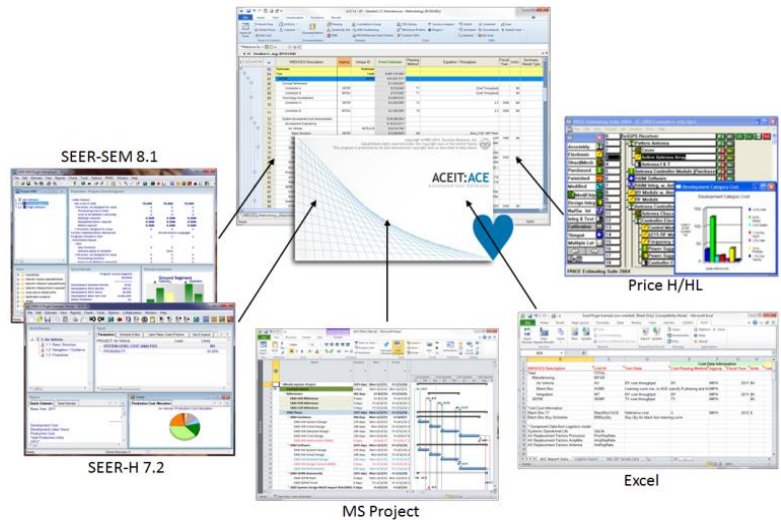
ACE Plug-Ins Overview



Great Estimates Rely on Data from Numerous Sources

Plug-Ins are powerful tools that allow an ACE user to seamlessly incorporate data from external 3rd party applications into an ACE session. With plug-ins analysts can choose the best tool available for estimating different elements of the overall estimate. Standard plug-ins are available to enable integration with the following 3rd party applications.

- ✓ Excel Plug-In (Excel 2010, 2013 and 2016)
- ✓ Price Plug-In (Price-H/HL 12.1)
- ✓ SEER Plug-In (SEER-SEM 8.1 and SEER-H 7.2)
- ✓ Project Plug-In (MS-Project 2010, 2013 and 2016)



Additionally, the **ACE-to-ACE Plug-In** allows a user to incorporate results from multiple ACE estimates into one summary estimate.

Key Features:

Excel

- Excel-to-ACE plug-in offers a unique way to import many types of data from Excel including cost, non-cost, time phased, learning curve, and uncertainty specifications
- Data is mapped to an Excel import template provided with ACEIT
- Refresh imported data en masse

MS-Project

- MS-Project data can be used within an ACE session to estimate WBS element phased costs
- Select tasks for import
- Import dates, durations, and costs
- Auto-create MS-Project DECs
- Refresh imported data en masse

Galorath Applications (SEER)

- SEER-SEM and SEER-H data can be used within an ACE session to estimate WBS elements
- Select SEER WBS elements for import
- Import Development, Production (SEER-H), and Maintenance effort / costs
- Import phased data
- View and import SEER input parameters
- Auto-create SEER DECs
- Refresh imported data en masse

Price System Applications

- Price-H and Price-S data can be used within an ACE session to estimate WBS elements
- Select Price WBS elements for import
- Import Price output costs
- View Price input parameters
- Refresh imported data when Price project changes



Features

Availability

ACEIT is a U.S. Government funded product available through Tecolote Research, Inc.

Licensing

The ACEIT Government Program Office has tasked Tecolote Research to recoup a fair share of the ACEIT distribution, maintenance and support (DMS) costs from each U.S. Government ACEIT site. An annual DMS fee entitles U.S. Government organizations and their support contractors to ACEIT distribution and technical support. All other agencies and companies have to purchase an ACEIT software license.



ACEIT Development
 Tecolote Research, Inc.
 Software Products Division
 5266 Hollister Ave., Suite 301
 Santa Barbara, CA 93111-2089
 phone (805) 964-6963

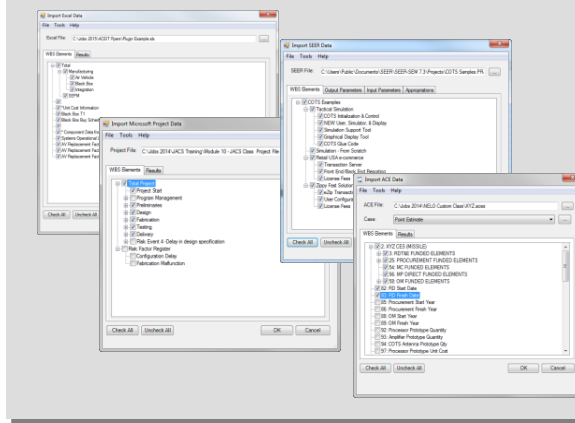
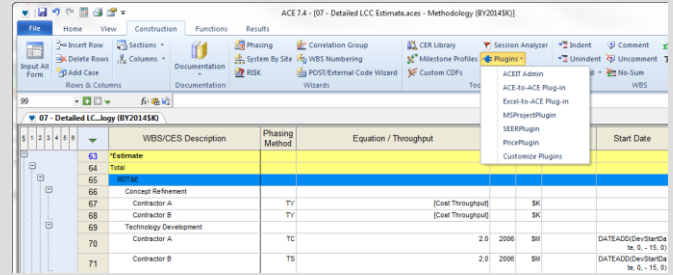
ACEIT Sales
 aceit_sales@tecolote.com
 phone (281) 333-0240
 fax (281) 333-0232

ACEIT Support
 aceit_support@tecolote.com
 phone (805) 964-6963

Website
 www.aceit.com

Plug-Ins are Accessed Directly within ACE

Plug-Ins are accessible from main ACE menu to allow quick and easy integration of key estimate information from 3rd party applications.

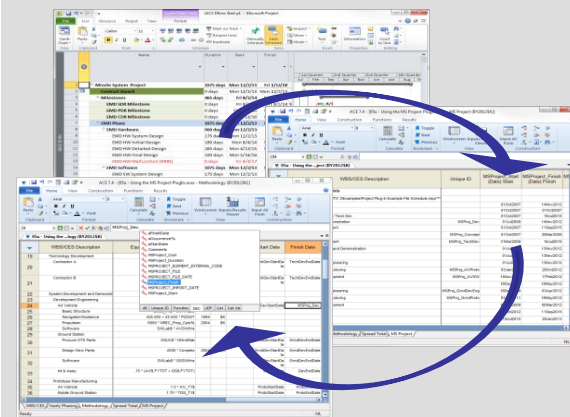
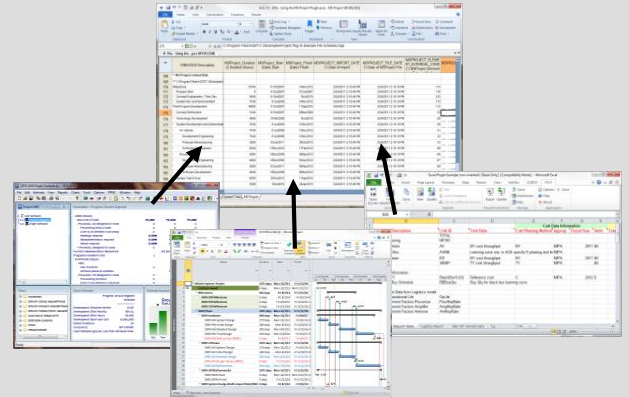


Analyst Controls Selection of Data

Common plug-in interface allows analysts to choose cost elements, activities, or data to import into an ACE file.

Retrieved Information is Stored in the ACE Session

Data is retrieved directly from the associated files and stored within ACE. Plug-ins allow easy update of information based on revisions to the external files; directly use this new data to calculate updated ACE results.



Schedules Can be Used to Drive Estimates

Program master schedules can be used as the basis for phasing the estimate or generating LOE results. Many incrementally funded activities are highly schedule sensitive. Analysts can link beta phasing and level-loading methods to specific activity start/end dates stored in a Project schedule.

additional information can be found at: www.aceit.com